

Nicrmo Fasteners

Specialist in Hot Forge Exotic Alloy Fasteners & Turn component

Manufacturers & Exporters of

- Stud Bolt • Hex Bolt • Hex Nut
- U-Bolt • Foundation Bolt



Nicrmo Fasteners PVT LTD



www.nicrmo.com

About Us

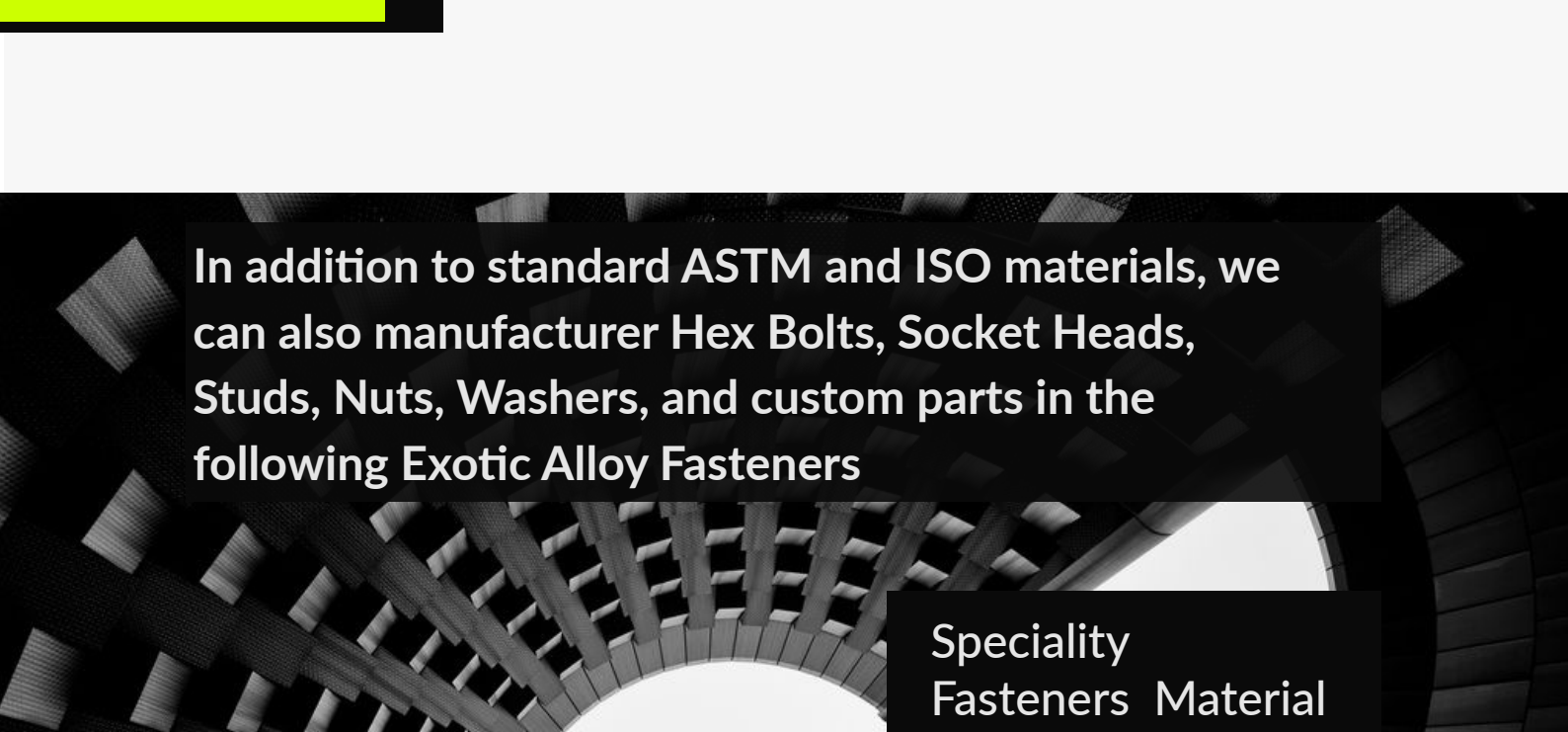
Nicrmo Fasteners

Nicrmo Fasteners is your one-stop source for all Exotic Alloy Fasteners and hard to find alloy fasteners. We stock an immense inventory of **Bolts, Nuts, Washers, and Studs** in a wide range of hard to find materials such as: **Nitronic 60, Brass, Silicon-Bronze, Monel, Inconel, Hastelloy, and alloy 20** fasteners are kept in stock and are ready for immediate release. In addition, let us know about your special Exotic Alloy Fasteners needs.

We specialize in manufacturing hex bolts, socket heads, studs, nuts, and washers in large diameter and specialty alloy fasteners. Our ISO 9001:2008 compliant quality management system ensures customer satisfaction by providing complete, correct, and on-time deliveries. Our sales team are fastener experts with several decades of combined fastener experience. Therefore no matter the specification, our experts will consistently provide you with the **perfect order.**

**On budget, on-time and
correct!**
We make this easy.





In addition to standard ASTM and ISO materials, we can also manufacturer Hex Bolts, Socket Heads, Studs, Nuts, Washers, and custom parts in the following Exotic Alloy Fasteners

Speciality Fasteners Material List

Copper, Brass & Bronze

Aluminum Bronze, Aluminum Nickel Bronze, Brass, Copper CDA 110, Manganese Bronze 675, Naval Brass 464, Phosphorous Bronze 510, Silicon Bronze 651, Silicon Bronze 655

Exotics

904L, A-286, AL6XN, Alloy 20, Alloy 50, Alloy 60, Avesta 2205, Avesta 254 SMO, Carpenter™ 20/CB3, Carpenter™ 21-12N, Columbium, Custom 450, Ferralium 255, Haynes™ 230, Haynes™ HR-120, Haynes™ HR-160, Haynes™ Ultimet 1233, Inconel™ 25-6MO, Nitronic Alloy 50, Nitronic Alloy 60, Tantalum, Titanium, Zirconium

Hastelloy™

Hasteloy™ B, Hasteloy™ C-276, Hasteloy™ C-2000, Hasteloy™ C-22, Hasteloy™ C-4, Hasteloy™ G, Hastelloy™ X

Inconel & Incoloy Nickel Alloys

Nickel Alloy B2, Nickel Alloy B3, Nickel Alloy C276, Nickel Alloy G-30, Inconel™ 600, Inconel™ 601, Inconel™ 625, Inconel™ 718 Inconel™ 800/800H, Inconel™ 825, Inconel™ 925, Inconel™ X750, Monel™ 400, Monel™ 405, Monel K-500, Nickel 200

PH Grades

13-8 MO, 17-4 PH, 17-7 PH

Steel Specials

B16, B7, H11, H13

HEX BOLTS & HEX SCREWS & HEAVY HEX BOLTS

Material Grade

Stainless Steels : 304L, B8, 309, 310, 316L, B8M, 317, 317L, 321, 347, 401, 416, 430 & 501

Diameter: M27 to M52 up to 500 MM in Length

Duplex & Super Duplex: UNS 31803, S32750

Diameter: M6 to M42 up to 300 MM in length

Hastelloy: Hastelloy C-276, Hastelloy C-22

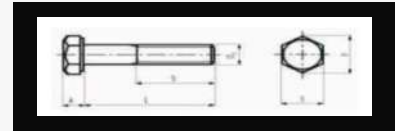
Diameter: M6 to M27 up to 300 MM in Length

Exotics : 904L, A-286, Alloy 20, Alloy 50, Nitronic Alloys 50, Tiytanium.

Diameter: M6 to M27 up to 300MM in Length

Nickel Alloys : Inconel 600, 601, 625, 718, 750, 800/800H, 825, 925, Monel 400, 405, K-500 & Nickel 200

Diameter: M6 to M27 up to 300 MM in Length



"b" measurement varies according to length of bolt All measurements in millimeters (m m & Inches)

U BOLTS STANDARD

Material Grade

Stainless Steels : 304L, 309, 310, 316L, 317, 317L, 321, 347, 401, 416

Diameter: M6 to M36

Duplex & Super Duplex: UNS 31803, S32750

Diameter: M6 to M36

Hastelloy: Hastelloy C-276, Hastelloy C-22

Diameter: M6 to M20

Exotics : 904L, A-286, Alloy 20, Alloy 50, Nitronic Alloys 50, Tiytanium.

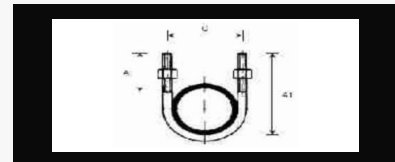
Diameter: M6 to M20

Nickel Alloys : Inconel 600, 601, 625, 718, 750, 800/800H, 825, 925, Monel 400, 405, K-500 & Nickel 200

Diameter: M6 to M20

Steel Specials : B16, B7

Diameter: M16 to M56



"b" measurement varies according to length of bolt

All measurements in millimeters (mm)
& Inches Size: 1/2" NB to 20" NB

T-HEAD BOLTS

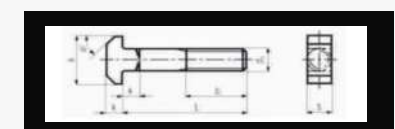
Material Grade

Stainless Steels : 304L, 309, 310, 316L, 317, 317L, 321, 347, 401, 416, 430 & 501

Diameter: M16 to M42 up to 300 MM in Length

Steel Specials : B16, B7

Diameter: M16 to M42 up to 300MM in Length



All measurements in millimeters (mm) & Inches

HEXAGONAL NUT & HEAVY HEX NUT

Material Grade

Stainless Steels : 304, B8, 309, 310, 316, B8M, 317, 317L, 321, 347, 401, 416, 430 & 501

Diameter: 1/4" - 3" Metric: M27 to M72

Duplex & Super Duplex: UNS 31803, S32750

Diameter: 1/4" - 3" Metric: M6 to M72

Hastelloy: Hastelloy C-276, Hastelloy C-22

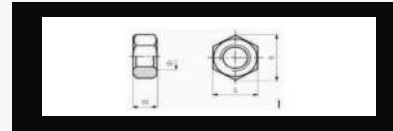
Diameter: 1/4" - 3" Metric: M6 to M72

Exotics : 904L, A-286, Alloy 20, Alloy 50, Nitronic Alloys50, Titanium.

Diameter: 1/4" - 3" Metric: M6 to M72

Nickel Alloys : Inconel 600, 601, 625, 718, 750, 800/800H, 825, 925, Monel 400, 405, K-500 & Nickel 200

Diameter: 1/4" - 3" Metric: M6 to M72



All measurements in millimeters (mm) & Inches DIN 934 / ISO 4032 / ASTM

PLAIN WASHERS

Material Grade

Stainless Steels : 304, 309, 310, 316, 317, 317L, 321, 347, 401, 416, 430

Diameter: M6 to M72

Duplex & Super Duplex: UNS 31803, S32750

Diameter: M6 to M72

Hastelloy: Hastelloy C-276, Hastelloy C-22

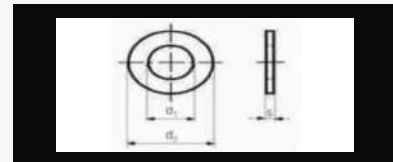
Diameter: M6 to M72

Exotics : 904L, A-286, Alloy 20, Alloy 50, Nitronic Alloys50, Titanium

Diameter: M6 to M72

Nickel Alloys : Inconel 600, 601, 625, 718, 750, 800/800H, 825, 925, Monel 400, 405, K-500 & Nickel 200

Diameter: M6 to M72



All measurements in millimeters (mm)
DIN 125 / DIN 7089

THREADED RODS : DIN 975 & DIN 976 & ASTM A 193

Material Grade

Stainless Steels : 304, B8 Class2, 309, 310, 316, B8M Class2, 317, 317L, 321, 347, 401, 416, 430 & 501

Diameter: 1/4" - 3" Metric: M27 to M72

Duplex & Super Duplex: UNS 31803, S32750

Diameter: 1/4" - 3" Metric: M6 to M72

Hastelloy: Hastelloy C-276, Hastelloy C-22

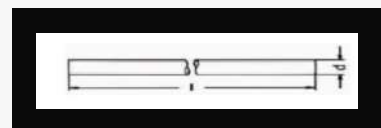
Diameter: 1/4" - 3" Metric: M6 to M72

Exotics : 904L, A-286, Alloy 20, Alloy 50, Nitronic Alloys50, Titanium

Diameter: 1/4" - 3" Metric: M6 to M72

Nickel Alloys : Inconel 600, 601, 625, 718, 750, 800/800H, 825, 925, Monel 400, 405, K-500 & Nickel 200

Diameter: 1/4"-3" Metric: M6 to M72



DOUBLE END STUD BOLTS

Material Grade

Stainless Steels : 304, 304B, 309, 310, 316, 316B, 317, 317L, 321, 347, 401, 416, 430 & 501

Diameter: 1/4" - 3" Metric: M27 to M72 in length 2000

Duplex & Super Duplex: UNS 31803, 32750

Diameter: 1/4" - 3" Metric: M27 to M72 in length 2000

Hastelloy: Hastelloy C-276, Hastelloy C-22

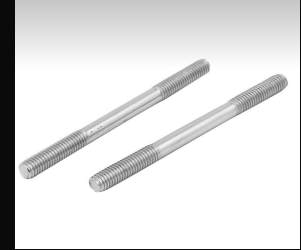
Diameter: 1/4" - 3" Metric: M27 to M72 in length 2000

Exotics : 904L, A-286, Alloy 20, Alloy 50, Nitronic Alloys50, Titanium

Diameter: 1/4" - 3" Metric: M27 to M72 in length 2000

Nickel Alloys : Inconel 600, 601, 625, 718, 750, 800/800H, 825, 925, Monel 400, 405, K-500 & Nickel 200

Diameter: 1/4" - 3" Metric: M27 to M72 in length 2000



All measurements in millimeters (mm)
DIN 835

SOCKET HEAD ALLEN CAP SCREWS

Material Grade

Stainless Steels : 304, 309, 310, 316, 317, 317L, 321, 347, 401, 416, 430 & 501

Diameter: M24 to M36 up to 300 MM in Length

Duplex & Super Duplex: UNS 31803, S32750

Diameter: M6 to M36 up to 300 M in Length

Hastelloy: Hastelloy C-276, Hastelloy C-22

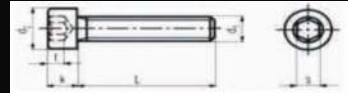
Diameter: M6 to M36 up to 300 MM in Length

Exotics : 904L, A-286, Alloy 20, Alloy 50, Nitronic Alloys50, Titanium

Diameter: M6 to M36 up to 300 MM in Length

Nickel Alloys : Inconel 600, 601, 625, 718, 750, 800/800H, 825, 925, Monel 400, 405, K-500 & Nickel 200

Diameter: M6 to M36 up to 300 M in Length



All measurements in millimeters (mm)
&Inches DIN 912 / ISO 4762

HEXAGON SOCKET SET SCREWS WITH FLAT POINT

Material Grade

Stainless Steels : 304, 309, 310, 316, 317, 317L, 321, 347, 401, 416, 430 & 501

Diameter: M6 to M27 up to 200 MM in Length

Duplex & Super Duplex: UNS 31803, S32750

Diameter: M6 to M27 up to 100 MM in Length

Hastelloy: Hastelloy C-276, Hastelloy C-22

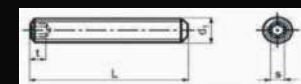
Diameter: M6 to M27 up to 100 MM in Length

Exotics : 904L, A-286, Alloy 20, Alloy 50, Nitronic Alloys50, Titanium

Diameter: M6 to M27 up to 100 M ni Length

Nickel Alloys : Inconel 600, 601, 625, 718, 750, 800/800H, 825, 925, Monel 400, 405, K-500 & Nickel 200

Diameter: M6 to M27 up to 100 MM in Length



All measurements in millimeters (mm)
&Inches DIN 913 / ISO 4026

DOCK ACCESSORIES

U HOOKS

Nicrmo U hooks are available both in MS and S ni different grades. These hooks are required for fixing of chains for fenders / fendering systems in new wharf / jetty or structures Nicrmo U hooks are available from 12 M diameter to 100 M diameter as per requirement. These hooks can also be used as an anchor for mooring rings



Stainless Stees: 304L, 316L, Duplex, Super Duplex &B7
Diameter: 1/2" NB to 20" NB &as per custom made

ANCHOR BOLTS

Nicrmo Anchor Bolts assemblies are generally employed to fix the fender to a new wharf or jetties to be constructed. One anchor bolt assembly contains one no. fender fixing bolt, one no. cast in sleeve with back side extension rod welded with end flange and front side flange and one no. loos washer as per fender type. The sleeves are cast integrally with the structure to ensure maximum strength, these sleeve can be supplied in stainless steel as per requirement. They are fixed with centering planks before casting of fender block, as per centre distances / template.



Stainless Stees: 304L, 316L, Duplex, Super Duplex &B7
Diameter: M12 to M56 length 3000mm

WEDGE BOLTS

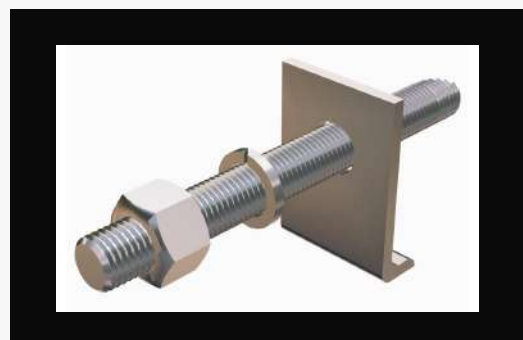
Nicrmo Wedge Bolts assemblies are generally employed to fix the fender to a new wharf or jetties to be constructed. One anchor bolt assembly contains one no. fender fixing bolt, one no. cast in sleeve with back side extension rod welded with end flange and front side flange and one no. loos washer as per fender type. The sleeves are cast integrally with the structure to ensure maximum strength, these sleeve can be supplied in stainless steel as per requirement. They are fixed with centering planks before casting of fender block, as per centre distances / template.



Stainless Stees: 304L, 316L, Duplex, Super Duplex &B7
Diameter: 1/2" NB to 20" NB &as per custom made

RESIN ANCHOR BOLTS

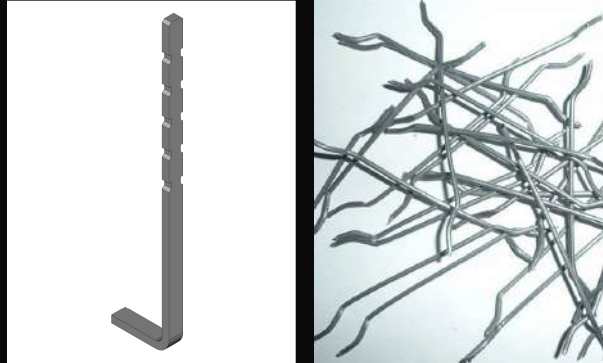
Nicrmo Resin Anchor Bolts assemblies are used both in new structure as well as replacement uses in old berths. They are encapsulated in very high strength epoxy mortar, which after inserting pre-packed bolt assembly in to the cavity prepared ni jetty and pushing it with little force, breaks the resin capsule and allows to mix the part-a-resin with part-b-hardner to form solid bond between bolt & concrete. One resin Anchor Bolt assembly contains one no. fender fixing stud, one no. nut, one no chemical resin capsule and one no. loose washer as per finder head



Stainless Stees: 304L, 316L, Duplex, Super Duplex &B7
Diameter: 1/2" NB to 20" NB &as per custom made

PRODUCT RANGE

- Refractory Anchors
- Bricking Shims
- Bricking Shelves / Konsoles
- Hexmetal - Flat Panels and Rolled
- Ceramic Fibre Fixing
- Ceramic Anchors
- Cast Products
- Stainless Steel Fibres
- 304L
- 316L
- 310
- Inconel 600
- Inconel 601



CUSTOM MADE PRODUCT



EYE BOLTS



LIFTING EYE BOLTS



TURN BUCKLES



U & V BOLT



J BOLTS



CARRIAGE BOLTS



SPRING NUT



TAPER WASHER

MATERIAL GRADE

- Stainless Steels
- Duplex & Super Duplex
- Hastelloy
- Exotics
- Nickel Alloys
- B7

SIZE

- M6 to 52mm
- 1/4" to 2"

Fasteners are the Bonds
Supporting the Foundation
of Your Future



Industries

We Serve

- Oil & Gas
- Petrochemicals
- Power
- Cement
- Chemicals & Fertilizers
- Pharmaceuticals
- General Engineering
- Ship Building
- Defense



Fastening Solution in
Monel, Inconel, Hastelloy, 904L, 4453 Gr. 660, Titanium, Duplex, Super Duplex Steel
& Nickel Alloys in all Grades & Specification High Nickel Alloy & Stainless Steel ASTM
Grade Fasteners



Nicrmo

Fastening Future, Strengthening world



www.nicrmo.com



+919819495121



info@nicrmo.com



J 294/5 G I D C Umbargaon, 396171, India

Nicrmo Fasteners Pvt Ltd